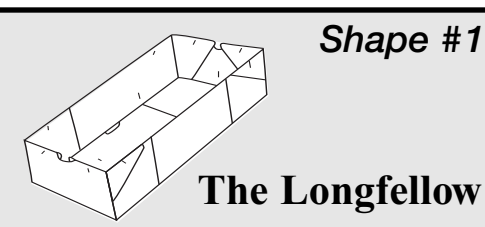


How to fold the *Adjustable Packer* for 8 different shapes!

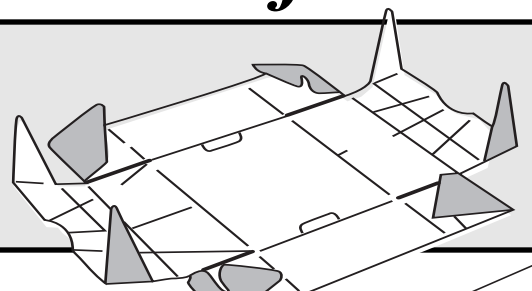


Shape #1

The Longfellow

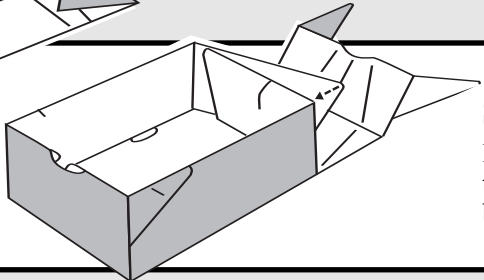
Step 1

Break scores of all corner and triangular flaps, also the **low** creases of end panels as shown.



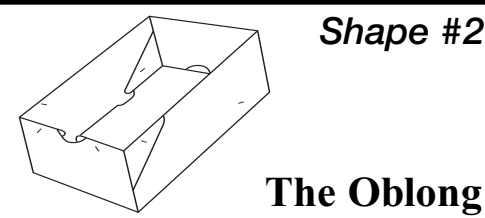
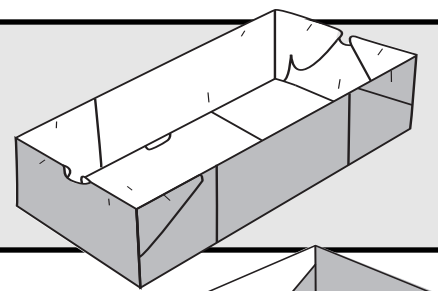
Step 2

Simply bring up corners straight and staple together on each side and ends.



Finish

This strong utility box is used for centerpieces, long planters, dish gardens, etc. Medium size measures 15x7x3 1/2 and the large size is 19x9x4 1/2.

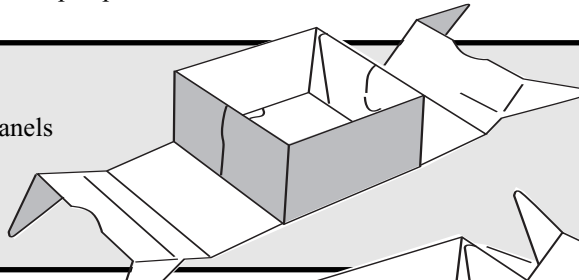


Shape #2

The Oblong

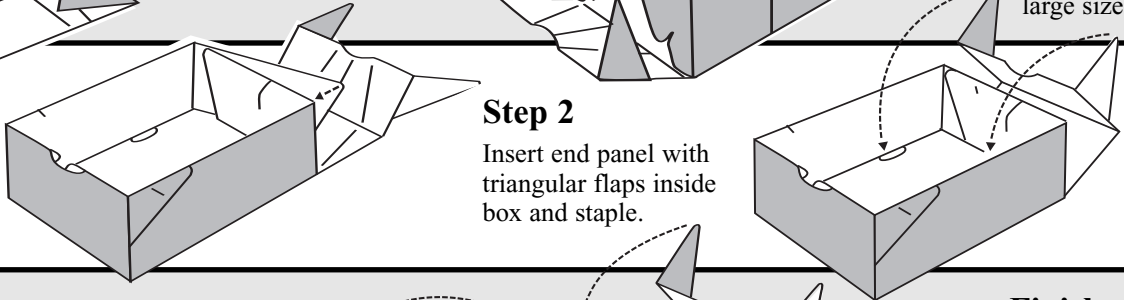
Step 1

Same procedure as Longfellow but **only on one end** - LOCK OTHER SIDE and turn triangular flaps up as shown.



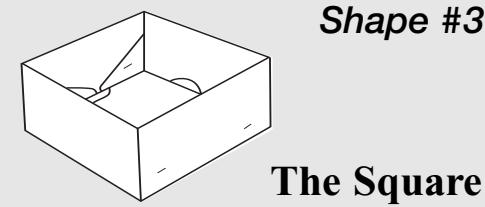
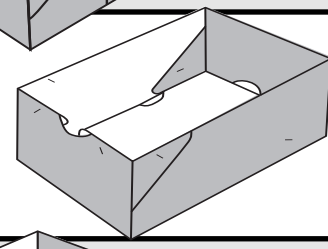
Step 2

Insert end panel with triangular flaps inside box and staple.



Finish

This shorter version of the Longfellow measures 11x7x3 1/2 in the medium size and 14x9x4 1/2 in the large size.

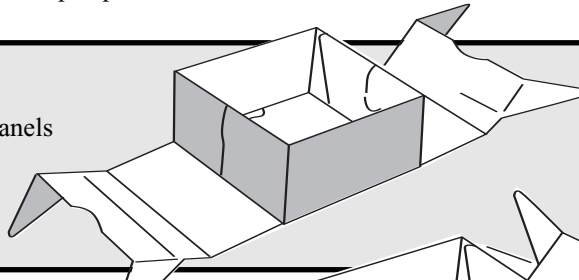


Shape #3

The Square

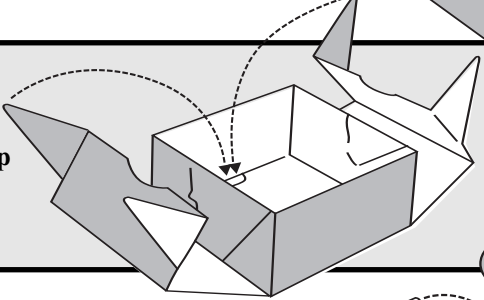
Step 1

Lock side panels as shown.



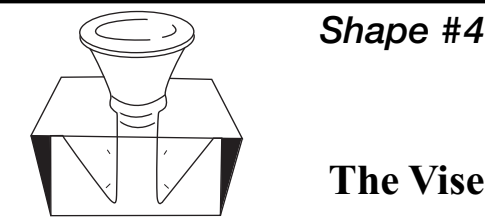
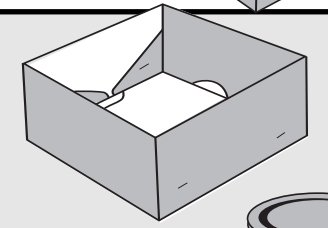
Step 2

Insert end panels with **triangular flaps turned up** inside of box and staple as shown.



Finish

This extra heavy duty square box measures 7x7x3 1/2 in the medium size and 9x9x4 1/2 in the large size.

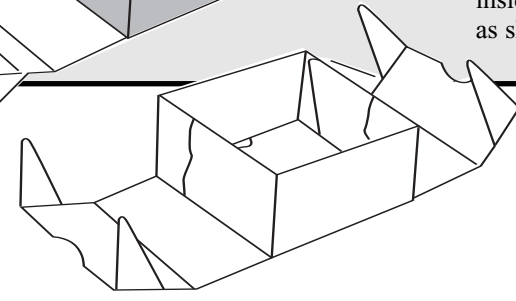


Shape #4

The Vise

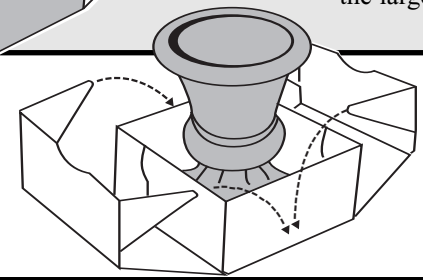
Step 1

Lock side panels as shown.



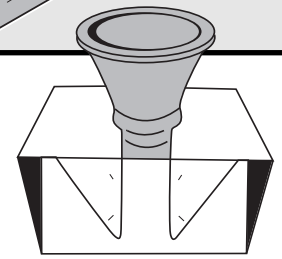
Step 2

Place any vase having a low neck in center of box.



Finish

Close end panels with **triangular flaps turned down** and staple **snugly** through the top or through the openings at bottom (or both). A really fine package.

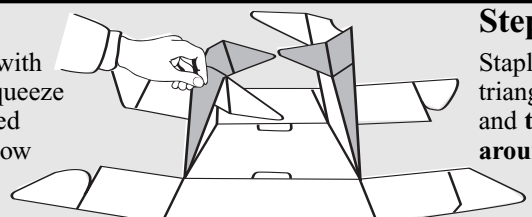


Shape #5

The Favorite

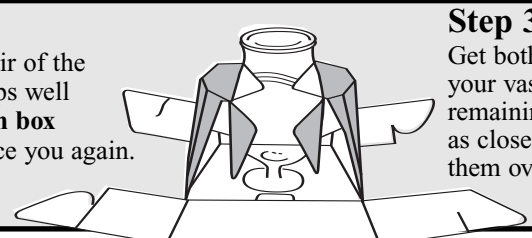
Step 1

Turn down collars with triangular flaps - squeeze and crush corrugated board, shape to follow contour of vase.



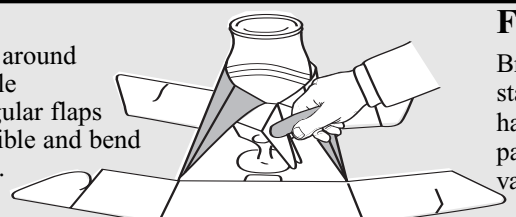
Step 2

Staple one pair of the triangular flaps well and **then turn box around** to face you again.



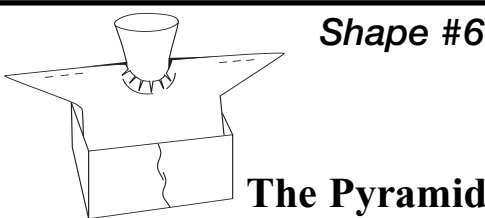
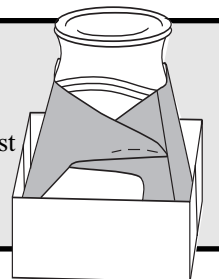
Step 3

Get both collars snugly around your vase and then staple remaining pair of triangular flaps as close to vase as possible and bend them over to either side.



Finish

Bring up side panels and staple together and you have the safest and neatest package possible for all vases of medium height.

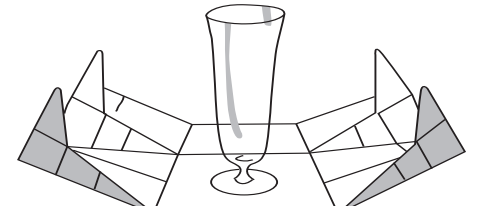


Shape #6

The Pyramid

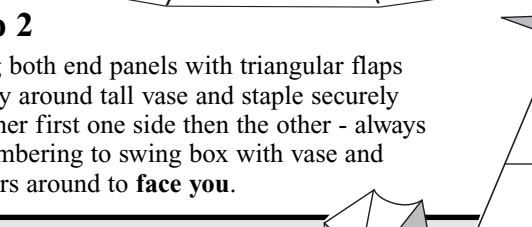
Step 1

Break diagonal scores and place tall vase in center of box as shown.



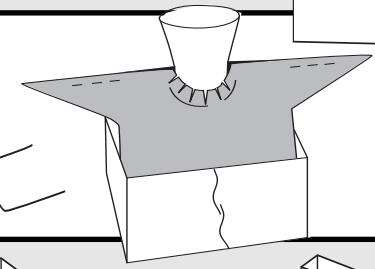
Step 2

Bring both end panels with triangular flaps snugly around tall vase and staple securely together first one side then the other - always remembering to swing box with vase and flowers around to **face you**.



Finish

Bring side panels up and lock together. There is absolutely no better way of packing a tall vase than this winged pyramid shape.

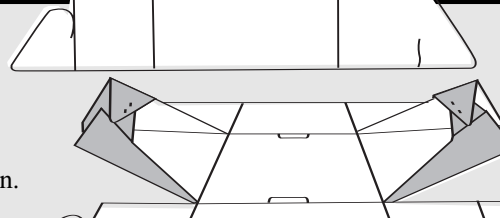


Shape #7

The Towers

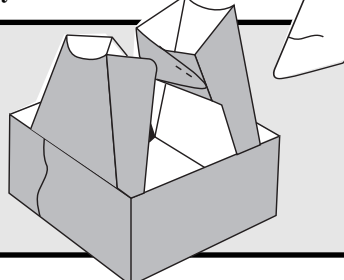
Step 1

Break diagonal scores and staple triangular flaps together as shown.



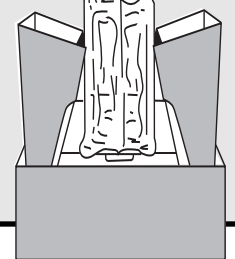
Step 2

Raise diagonal panels upright inside box - lock side panels together.



Step 3

Wedge block vase between upright diagonal panels.



Finish

This shape is ideal **only for block type vases**.

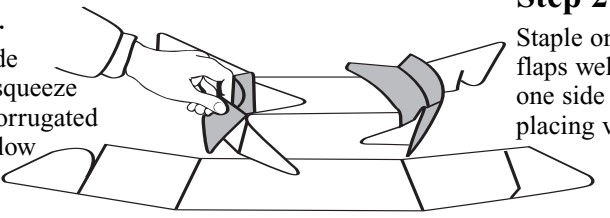


Shape #8

The Low-Boy

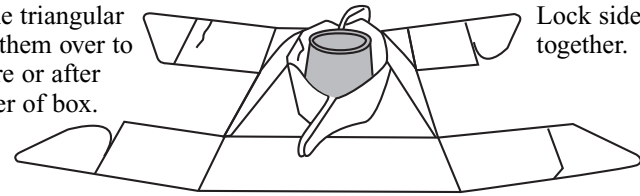
Step 1

Break **lower** scores of side panels and squeeze and crush corrugated board to follow shape as shown.



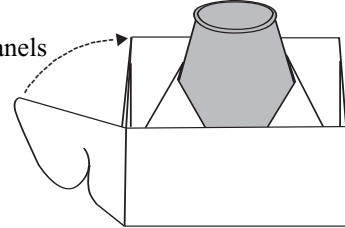
Step 2

Staple one pair of the triangular flaps well and bend them over to one side either before or after placing vase in center of box.



Step 3

Lock side panels together.



Finish

This is an excellent shape for any and all small, low and dainty arrangements - bear in mind that you can shape the inner part of the packer to fit an oval, round or square base too.

